

Beach Cities Learning (“BCL”) and Learn Academy have protocols in place to address COVID-19 related issues for the next academic year. BCL/Learn Academy will abide by the safety measures and will strictly follow guidelines set forth by the Center for Disease Control and Prevention, the State of California, and Los Angeles County.

- <https://www.cdc.gov/coronavirus/2019-ncov/communication/guidance-list.html?Sort=Date%3A%3Adesc>

All employees and Staff will be required to wear Personal Protective Equipment (“PPE”) such as masks and gloves. PPE will be provided by BCL/Learn Academy. In addition, all employees and Staff will be provided with hand sanitizers, and work areas will be sanitized at least once a day. Based on the recommendations and guidelines set forth by the State of California and the County of Los Angeles, the following options may be available for the next academic year:

- Safety Precautions: - Steps to be followed:
 - 1-Washing hands (minimum 5x a day)
 - 2-Distancing-minimum 6 feet
 - 3-Temperature Screening
 - 4-Mask wearing
 - Daily Janitorial Services
 - Face shield for BIs
 - Gloves
 - Plexiglass Screens when appropriate

1. New Pick Up/Drop Off Policy

- Staff will be performing the student Pre-Session Health Assessments, including a temperature check on a daily basis
- Please wait in your vehicle until Staff instructs that they are ready to perform the Pre-Session Health Assessment
- Staff will not be entering students’ vehicles/or getting on the bus in any way at this time. Parents and bus attendants will be asked to remove the child from the vehicle and all persons in the vehicle at drop off will exit the vehicle for the Pre-Session Health Assessment.
- Staff will take the child into the school once the Pre-Session Health Assessment has been completed.
- Your child’s staff will bring students out to a parent vehicle or bus at the end of the day. Parent/Caregiver or bus attendant will put the child in the vehicle

2. New Visitor Policy

To ensure the safety and well-being of all staff and students in the building, exterior doors will remain locked at all times throughout the day. At this time, visitors are not permitted in the school building for any reason.

3. Related Services Model

Related Services are an integral part of the school day. Teachers, Instructors and Related Service Providers work collaboratively to ensure a student’s needs, per their IEP or Distance Learning Plan, are addressed across multiple environments.

4. Health and Safety: Adhering to CDC Guidelines

CDC Guideline	Actions/Changes
Educate staff and families about when they/their child(ren) should stay home and when they can return to school.	<ul style="list-style-type: none"> ● Staff training ● Family Training
Hand Hygiene and Respiratory Etiquette	<ul style="list-style-type: none"> ● Hand washing upon arrival and before dismissal ● Frequent handwashing throughout day ● Lessons focused on hygiene
Cloth Face Coverings: Recommended full day if you can't distance 6 feet apart	<ul style="list-style-type: none"> ● Staff will be required to wear PPE equipment ● Students will be encouraged to wear PPE ● Lessons focused on toleration of PPE
Adequate Cleaning Supplies and protective equipment	<ul style="list-style-type: none"> ● Daily Sanitizing ● Deep cleaning procedures done nightly ● Wednesdays and Saturdays will be used for sanitization before next group enters building
Signs and Messages around the school	<ul style="list-style-type: none"> ● Signs are posted in all bathrooms, classrooms and common areas
Shared Objects Discourage sharing of items that are difficult to clean or disinfect.	<ul style="list-style-type: none"> ● Strictly classroom-based materials ● Student specific materials
Spacing: Physical Distancing	<ul style="list-style-type: none"> ● Classrooms split into 2 rooms ● Modify Lunch Schedules/locations ● Modified Schedules ● No groups or dyads
Physical Barriers and Guides Throughout Building:	<ul style="list-style-type: none"> ● Signage poster throughout school ● Additional barriers added between students in classrooms
Limit Communal Spaces Close communal use shared spaces such as dining halls and playgrounds with shared playground equipment if possible; otherwise, stagger use and clean and disinfect between use.	<ul style="list-style-type: none"> ● Cafeteria and learning kitchens will be closed ● Playgrounds will have strict schedules and cleaning in between each use

4. Adhering to CDC Guidelines (cont'd)

CDC Guideline	Actions/Changes
Food Service	<ul style="list-style-type: none"> ● No storage of food/drink items ● No use of Cafeteria/lunches and snacks will occur in the classroom ● No food preparation
Limit non-essential people in building	<ul style="list-style-type: none"> ● Virtual Meetings ● New Visitor Policy
Health Screenings for staff and students	<ul style="list-style-type: none"> ● Daily Health Screening online ● Temperature checks upon arrival

5. Family Input and Training

Families were given the opportunity to fill out a survey in regard to what they want fall programming to look like. In addition, they were able to provide insight into what concerns or challenges they feel may arise with resuming in-person instruction. As part of the planning process, the parent handbook will be modified to include new policies, procedures and modifications that will be in place throughout the recovery plan. Families will be given updated information as it becomes available. Before resuming in-person instruction, The BCL School will conduct a virtual Back to School Night Thursday, September 17, 2020 at 5:00 pm to go over new policies, schedules and to ensure that families understand their role in resuming in the safest way possible. (zoom link will be sent out later this week)

6. New Health Policy

<https://www.cdc.gov/coronavirus/2019-ncov/symptoms-testing/symptoms.html>

BCL will follow CDC guidelines and update as needed. People with COVID-19 have had a wide range of symptoms reported – ranging from mild symptoms to severe illness. These symptoms may include, but are not limited to, fever or chills, cough, shortness of breath or difficulty breathing, fatigue, muscle or body aches, headache, new loss of taste or smell, sore throat, congestion or runny nose, nausea or vomiting, diarrhea. Should a student exhibit any of these symptoms while at school, they will be isolated and parent/caregiver will be notified immediately to be picked up. If a child is sent home with one or more of these symptoms, a Dr's note would be required to return to school and they should be symptom free and non-medicated for 24 hours prior to returning to school.

The BCL School fosters a healthy environment for students. Students are not allowed to attend school when they present with symptoms of acute or contagious illness (e.g., vomiting, diarrhea, fever). They must be symptom-free and be non-medicated for **24 hours** prior to returning to school. Parents/Guardians will be notified immediately should symptoms of illness arise while at BCL and are expected to pick up their child in a timely manner when needed (i.e., within one hour). In the case of a rash, the student must demonstrate absence of symptoms and/or a physician's note to return to school. Emergency Medical Services (EMS) may be activated for students who have a grand mal seizure during the school day. A physician's assessment and a note with a return date to school for the student will be needed prior to the student's return to school.

To prevent the spread of COVID-19:

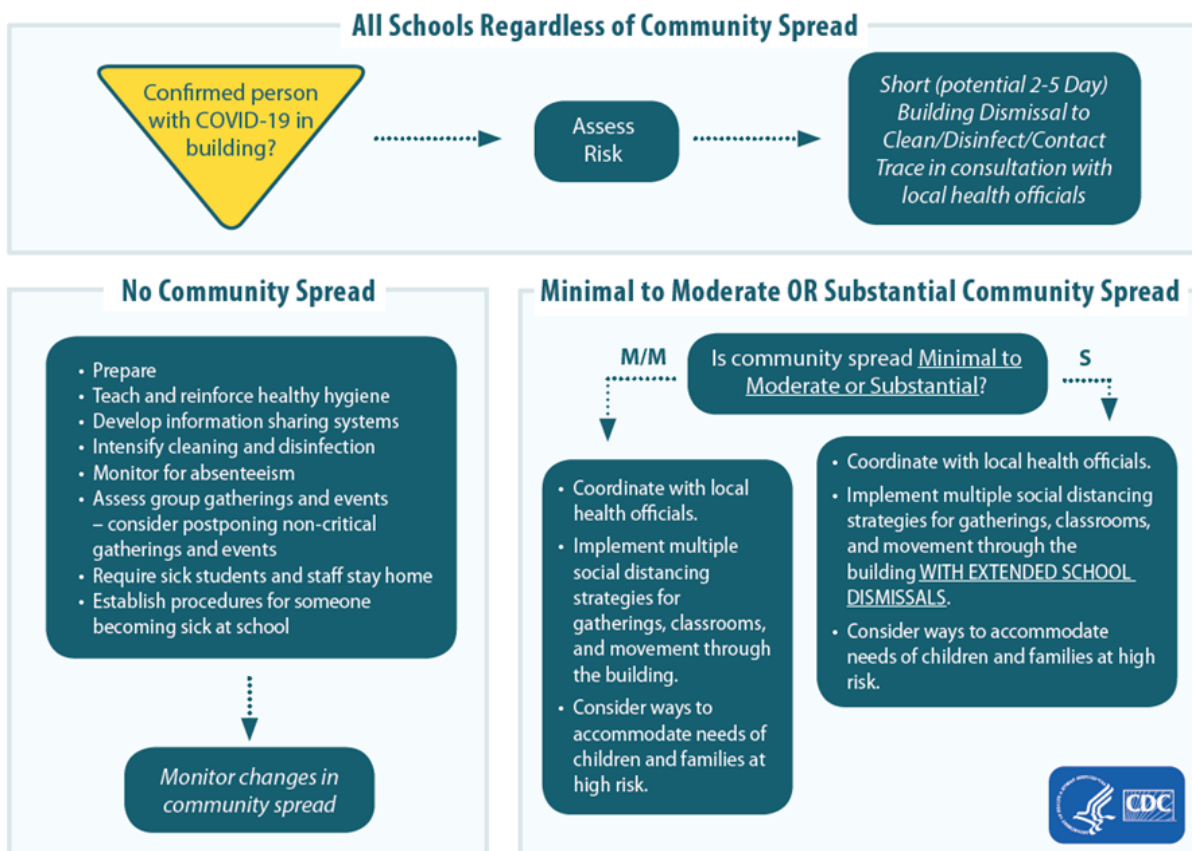
- Children with signs/symptoms of COVID-19 or who have been exposed to others with COVID-19 will be required to stay home
- Children who develop signs/symptoms of COVID-19 while at the program will be immediately separated from others and the program staff will contact the family member and/or emergency contact to pick the child up
- Staff will participate in a daily Pre-Session Health Assessment, including a temperature check

- Staff who exhibit signs/symptoms of illness will be required to stay home until they are symptom free for a minimum of 24 hours without the use of fever reducing medication
- Per CDC recommendation, we encourage families to practice frequent handwashing at home, social distancing, and wearing a face covering in public whenever possible
- Per CDC recommendation, we are requiring staff members to wear a face covering while at The BCL School
- The BCL School staff and students will practice handwashing upon arrival to the program, before meals and snacks, after outdoor play (when applicable), after using the bathroom, prior to going home, after nose blowing or assisting a child with blowing their nose
- The BCL School will regularly clean and disinfect frequently touched surfaces, including tables, doorknobs, light switches, countertops, handles, desks, electronic devices, toilets, faucets, and sinks
- There will not be peer socialization or group learning at this time. Social distancing will be practiced throughout the school
- Classroom size has been reduced and the rooms have been arranged to promote Social distancing
- Parents/Caregivers are not permitted in the school at this time

If a student or staff member tests positive for COVID-19:

- The local public health department will be contacted. The BCL School will follow their guidance for next steps
- The BCL School will notify families of any confirmed staff or client cases of COVID-19
- The BCL School may close for an undetermined amount of time based upon guidance from local agencies as well as LEARN

School Decision Tree



7. Sanitization and Cleaning

We have implemented increased sanitization protocols that require all staff and students to wash/sanitize hands upon center entry, to sanitize all workspaces when leaving a room, and to sanitize the entire school after each session. This is in addition to janitorial services already in place. Additional cleaning and sanitization procedures will be required to assist in the safety for all students and staff. Cleaning and sanitization will take place as needed throughout the day and a deep cleaning will take place at the end of each school day.

Universal “sanitized” and “dirty” signs will be used throughout the building to note whether a space or item is ready to be used by another group. Shared spaces (i.e., gym spaces, playgrounds) will be limited to no more than 2 students at a time and must be properly sanitized before new groups of staff/students are permitted to enter. All surfaces that students or staff come in contact with will need to be wiped down with a disinfecting wipe or spray. Smaller items and manipulatives that students have use will be properly sanitized after use (i.e., wiped down with a disinfectant wipe or washed with soap and water).

8. Protective Equipment

Staff will be required to wear PPE in the building and when interacting with students/families outside (i.e., parking lot at drop off/pick up, on the playground, when taking walks, etc.). Required PPE includes wearing a mask that covers your mouth and nose and wearing a BCL provided lab coat. Face shields and gloves will also be provided. Guidelines and training on use of PPE appropriately will be provided by BCL staff. Students will be encouraged to wear PPE as much as possible.

9. Building Modification

Due to the recommendations from the CDC, The BCL School will be making the appropriate adjustments and modifications to the building to ensure that shared spaces are limited and that social distancing is practiced to the greatest extent possible. Each classroom will have two rooms assigned to each in order to accommodate social distancing guidelines. No more than 15 staff and/or students will be allowed in a classroom at any one time. Shared spaces such as gyms will have a 2-student maximum capacity. In addition to limiting the number of staff members and students in a room, dividers have been added to student’s work areas in order to create adequate barriers. Bathrooms that have multiple sinks have had plexiglass added to ensure adequate spacing between individuals. In addition to the physical modifications, signs have been posted all throughout the school to promote healthy hygiene habits.

10. Transportation

For students arriving on a bus, daily temperature checks will be done once they have exited the bus and before entering the school building. For any students exhibiting signs consistent with COVID-19, they will be taken to an area to isolate from other students/staff until they are able to be picked up from school. Families should be available to pick up their child within one hour of being contacted.